

## REFLECTORS

See below our a wide range of high quality replacement luminaire reflectors. All our reflectors are manufactured to the highest standards. We focus on creating reflectors which offer the best uniformity of light, which improves efficiency and production.

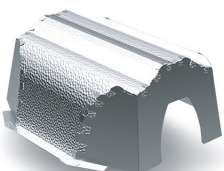


### NLR0001-1

SKU: NLR0001-1

**Replacement reflectors for NXT2 1000w fixture.**

These three types of reflectors can be used in multiple applications as replacement for NXT2 1000W type fixtures. The material of this reflector is 100% hammered aluminum and gives a perfect uniformity and can be used in multiple applications.

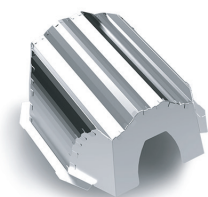


### NLR0001-2

SKU: NLR0001-2

**Replacement reflectors for NXT2 1000w fixture.**

These three types of reflectors can be used in multiple applications as replacement for NXT2 1000W type fixtures. For this reflector we took a combination of polished (heads) and hammered (top) material to give you an improved efficiency.

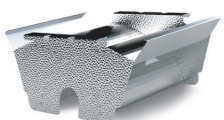


### NLR0001-3

SKU: NLR0001-3

**Replacement reflectors for NXT2 1000w fixture.**

These three types of reflectors can be used in multiple applications as replacement for NXT2 1000W type fixtures. This is the latest model made of 100% polished material for improved efficiency and depth in your crop.

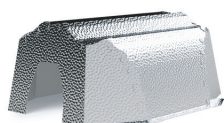


### NLR0003

SKU: NLR0003

**Replacement reflector for Lights Interaction 1000W Version 2 fixtures.**

This new model reflector can be used in all 1000W Lights Interaction version 2 models (large reflector housing). Improve your performance and efficiency by using this new developed reflector. The NLR0003 is designed to fit within your old reflector housing (only the inner reflective part of the reflector is provided).

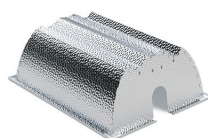


### NLR0005

SKU: NLR0005

**Replacement reflector for NXT2 600W fixture.**

The material of this reflector is 100% hammered aluminum and gives a perfect uniformity and can be used in with the 600W NXT2 fixture.



### NLR0007

SKU: NLR0007

**Replacement reflector for the Gavita 1000w fixtures.**

The material of this reflector is 100% hammered aluminium and gives a perfect uniformity and can be used in multiple applications.